



Life•line Wireless “Are You O.K.?” Network System

Introduction:

Life•line® (Lifeline) is a **proven** compliance based and cost cutting life-safety, personnel and environmental surveillance system. It proactively in real-time asks its users and, if necessary, the environment “**Are You O.K.?**”.

Small, light weight, rugged hand held (or body wearable) computers audibly ask “**Are You O.K.?**” and then requests a physical response. The interval of how often this occurs is based on the hazard level of the location being occupied. All information is shared over a robust wireless network with one or more monitoring stations.

Federal, State and Local regulations governed the accuracy of Lifeline’s “**Are You O.K.?**” technology and enables many industries to:

- Safely re-deploy workers
- Reduce insurance costs
- Improve overall safety
- Save significant money

Lifeline also asks the “**Are You O.K.?**” question to meters/sensors in the environment that interoperate with it. Real-time readings, user and location data is also similarly communicated over the same secure wireless network.

Some typical Lifeline integrated sensor and detectors include, but not limited to:

- Chemical (O₂, combustible, toxic)
- Physiological (Heart rate, Temperature)
- Radiological
- Chemical Warfare
- GPS

Lifeline’s efficient and effective use of people, equipment, data and resources has and continues to provide commercial and government sectors safer and more cost effective environments than any other known system in use today.

Added Features:

Lifeline is a fail-safe communication tool that provides:

- **Two-way voice communications**
- **Two-way alarms/alerts**
- Loss of signal notification
- Low battery indication

Most operations can be performed while wearing gloves via single large multi-use display button.



Portable Safety Monitor

Industries that have benefited from Lifeline include:

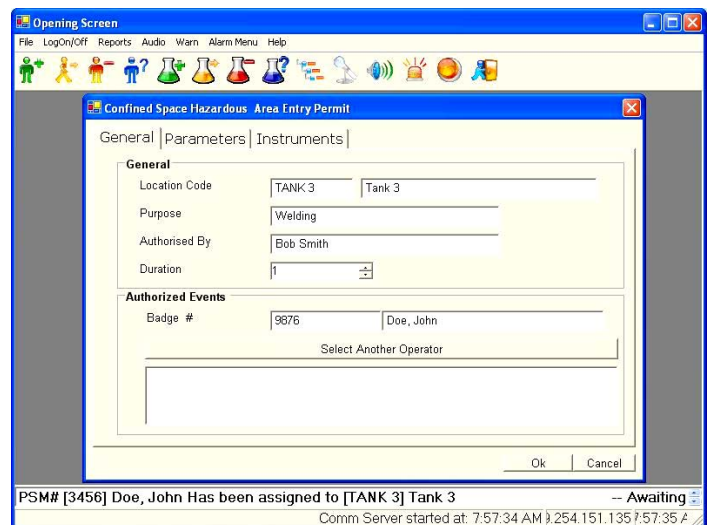
- Commercial/Government Aircraft maintenance/ manufacturing (Confined Space)
- Energy Production / Power Plants (Lone Worker)
- Homeland Security & First Response (Environmental Monitoring & Haz Mat Response)
- Petroleum & Chemical (Perimeter & Confined Space)
- Pulp & Paper (Perimeter & Confined Space)
- Commercial/Government ship/boat maintenance/manufacturing (Confined Space)

Scenario:

Lifeline is the optimum system for monitoring personnel and the environment in areas such as: confined space, remote or hazardous locations.

Lifeline Portable Safety Monitors (PSM)s are issued to confined space or hazardous area entrants. Real-time data of their physical condition and the environment is wirelessly sent to decision makers in a safe location.

If Lifeline detects a hazard condition or if help is needed, alarm and voice data will be directed to appropriate personnel or resources using a nationally recognized standard for data sharing.



Safe Environment Engineering

28474 Westinghouse Place, Valencia, CA 91355
 Tel: 661-295-5500 • Fax: 661-294-9246
 E-mail sales@safeenv.com • www.safeenv.com

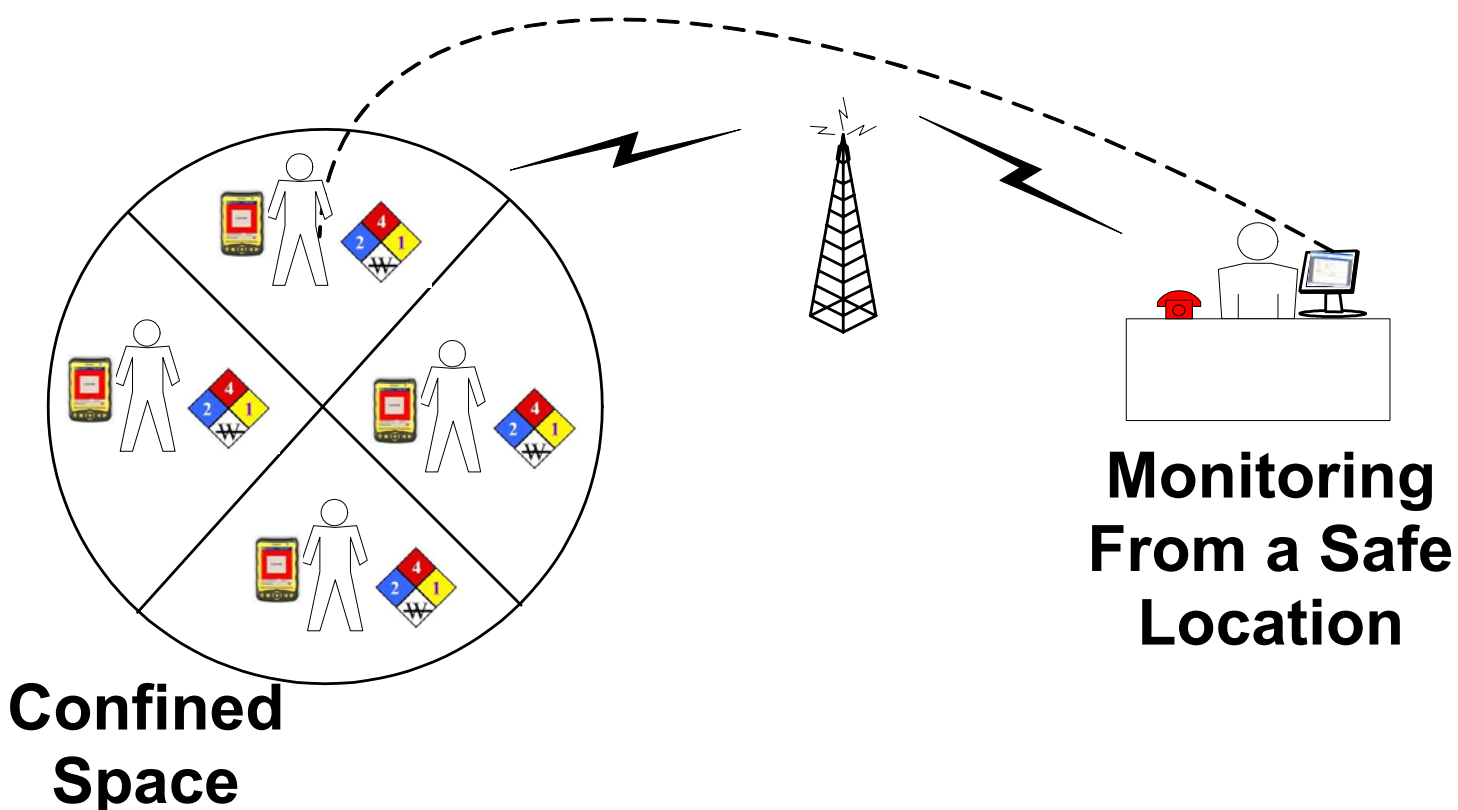


System Description:

The Lifeline system is comprised of portable handheld computers (PDA/Cell Phone), supporting consoles for data entry, a system server and a wireless network. Lifeline is a software based product that works on a wide variety of commercially-off-the-shelf (COTS) hardware.

Safe Environment Engineering sells both software and hardware to support our systems as well as providing systems integration, installation and training.

Life•line



Lifeline advantages:

- Saves Money
- Increases Safety
- Lowers Insurance Costs
- Provides Personal Real-Time Protection
- Fail-Safe Robust Wireless Network
- Multi -Use Network
- Multi-Use Hardware
- Can be Used with Legacy Meters/Sensors
- Works with Multiple Dissimilar Meters/Sensors
- 2-Way Wireless Voice
- 2-Way Wireless Alarming/Alerting
- Automated Record Keeping/Audit Trail
- Permit Generation
- Field Proven
- Real-Time Multi-Meter/Sensor Display Data

Safe Environment Engineering

28474 Westinghouse Place, Valencia, CA 91355
Tel: 661-295-5500 • Fax: 661-294-9246
E-mail sales@safeenv.com • www.safeenv.com