



Life•line®

Wireless Interoperable Telemetry Services

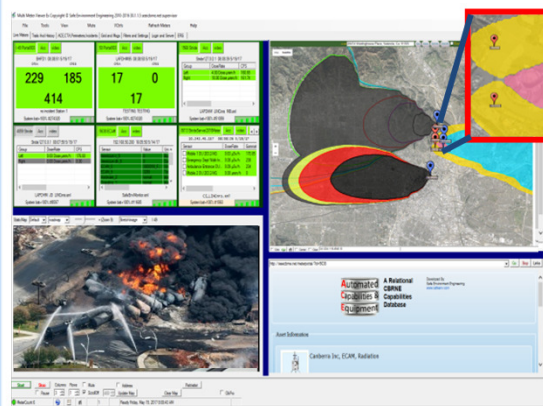


Safe Environment Engineering provides an IoT system solution for collecting, monitoring, displaying, notifying, and aggregating instrumentation data, including the CBRNE family of instruments. We provide wireless interoperable network telemetry devices that connects both new and legacy instrumentation to the cloud. Our comprehensive environmental software suite replicates instrumentation displays while also presenting their readings within a geographic information system (GIS). We also offer complementary services such as sensor data management, 3D plume modeling and asset/personnel capabilities management. Our systems can integrate with other Federal and commercial tools.



The **Smart LINC** mobile smart device is a comprehensive communications tool for environmental monitoring sensors. With its integrated software the Smart LINC collects, displays, notifies and distributes live environmental information. Capabilities include:

- Simultaneous WiFi and Cellular Connectivity
- FirstNet Ready – The Smart LINC can operate on the FirstNet Public Safety Broadband Network providing priority and preemption of live sensor readings when it is needed most.
- Fast Direct Cloud Server Posting – The Smart LINC acquires sensor readings and asynchronously posts the data to the Safe Environment Engineering Sensor Servers for further broad distribution.
- Multi Instrument Simultaneous Operation – Up to 5
- Data Store Forward ****New**** - If connectivity is lost or not available, data is stored on the device and forwarded to the Sensor Servers when the Internet again available.
- Smart Device Functionality – Voice/Video/Messaging
- Peer-to-Peer Video Streaming App – The SEECam app is a streaming video tool utilizing a direct connection between the Smart LINC and the MultiMeterViewer
- Rugged, Hazardous Location Rated
- Bluetooth, Serial, USB, Ethernet Connectivity



The **MultiMeterViewer** is a comprehensive environmental Common Operational Picture (COP) tool that consolidates live data from the Life•line Mobile and Desktop Meter Applications and displays this as virtual instrument faceplates and/or in an Emergency Operations Center map view showing the instrument's location, alarm status and other meta data. A geographical information system (GIS) map interface provides instrument information including a 3D terrain and CAMEO Plume Models, tracking and survey information as map layers. The MultiMeterViewer provides an extension to our Lifeline Meter Applications allowing Subject Matter Experts, Incident Commanders and Safety Professionals the ability to instantly view and share field instrument data.

Safe Environment Engineering

28320 Constellation Road • Valencia California 91355

Tel (661) 295-5500 • E-mail support@safeenv.com • www.safeenv.com

Established 1993 – Celebrating 29 Years



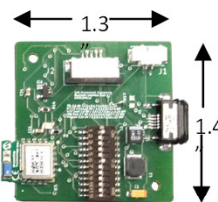


Dräger X-site Live - Real-time scalable area monitoring. Benefit from up to 7 toxic and combustible gas detection plus radiation and particulate sensors in a convenient, easy to carry case. Instruments removable for multi-purpose use. Remote visibility with unsurpassed communications capability enabled by FirstNet® integration.

- Area Monitor or Dismounted PPE/Survey Detection
- No special licensing
- Includes Internet Service
- Autonomous Operation – no modem dependency
- Expandable – sensor (instrument) agnostic

Manufactured by Safe Environment Engineering and powered by FLIR the LINC Mobile Radiological System (**LINCmrs**) is versatile self-contained wireless multi-mission radiological isotope detector easily configured for different types of monitoring requirements. Examples include mobile vehicle systems, portal applications, fixed facility and grouped for events requiring increased sensitivity detection.

- **Identification and Spectra Acquisition** - Integrated FLIR S900 software provides local access for isotope identification, alarm notifications and live/historical spectral analysis.
- **Configuration** - Users can custom configure isotope detection alarm and warning states to meet their unique facility or incident requirements
- **Remote Control** - Wireless Smartphone remote control providing simple single click operation for multi LINCmrs control.



BlueLINC

- For legacy non-Bluetooth instruments
- Supports multiple protocols – Serial (RS232), Serial (TTL), USB Host and USB Client
- Programmable – software and dip switch
- Integrated L-Ion battery charger
- Very low power consumption
- Multiple case configurations or embedded
- Integrated battery or external power options (3.3V or 5V)

Safe Environment Engineering

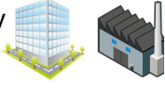
28320 Constellation Road • Valencia CA 91355

Tel (661) 295-5500

E-mail support@safeenv.com • www.safeenv.com

System Benefits

Facility Safety & Security



First Responder Safety



Force Multiplier



Save Time & Money



Compliance with Presidential Directive



Actionable Information



Continuity of Operations



Offset Fines, Litigation or Penalties



Reduced Insurance



Environmental Compliance



- First Responder safety - provides immediate remote hazardous environment status between the Entry Team and the Safety Officer.
- Force multiplier – Subject Matter Experts and other response agencies have immediate knowledge of environmental hazards.
- Compliance with Presidential Policy Directive / PPD-8 strengthening the security and resilience of the United States
- Continuity of operations - Ensure that Primary Mission Essential Functions (PMEFs) continue to be performed during a wide range of emergencies
- Reduced insurance
- Saves time – Immediately knowing environmental conditions. Faster first response – more teams know what the exact state is and can prepare ahead of time. Downrange personnel do not have to leave the hot zone to share with SMEs. Early detection can stop the hazard at the perimeter.
- Save money – Reduced First Responder footprint at events through greater knowledge of the hazard and faster response. Faster sharing of information can shorten the event and return continuity of operation. Used as a preventative tool could eliminate the event from happening
- Actionable information – system knows who data is coming from, what the data is, its location, the state of the instrument, the training level of the user and if there is video what it is coming from.
- Utilize for compliance or to offset fines, litigation or penalties.

Ludlum <ul style="list-style-type: none"> • 2241 • 2242 • 2360 • 3001 	Braker Detection <ul style="list-style-type: none"> • RAID-M/XP • RAID-S2/TIMON • RAPID/Plus • RadSentury
FLIR <ul style="list-style-type: none"> • Stride • Raider • IBAC • IdentIFINDER • R100, R200, R300 • R400, R500 	Berkley Nucleonics <ul style="list-style-type: none"> • SAM 940 Defender
Draeger Safety <ul style="list-style-type: none"> • X-am 8000 • X-am 7000 • X-am 5000 • IMS • X-zone • X-Site 	TSI <ul style="list-style-type: none"> • DustTrak 8530/8533 • SidePak • Environmental
Rae Systems <ul style="list-style-type: none"> • Qrae • PPBRae • MiniRae • MultiRae Pro • UltraRae • ChemRae • AreaRae Pro 	Turner Designs <ul style="list-style-type: none"> • C3 Submersible Fluorometer
Met One Instruments <ul style="list-style-type: none"> • EBAM 	Industrial Scientific Corp. <ul style="list-style-type: none"> • ITX • VX500 • MX4/MX6
Ortec <ul style="list-style-type: none"> • Detective 	ThermoFisher <ul style="list-style-type: none"> • MDS • FH40G • DataRam • PackEye • RIIDEye • RadHalo • Interceptor • TPM903 • FirstDefender
Safe Environment Engineering / FLIR <ul style="list-style-type: none"> • LINCmrs 	Radiation Solutions Inc. <ul style="list-style-type: none"> • RadAssist
Proengin <ul style="list-style-type: none"> • AP4C • AP2C 	Environics <ul style="list-style-type: none"> • ChemPro 100
Canberra <ul style="list-style-type: none"> • PRD-77 • UltraRadic • Falcon 5000 • ECAM 	Chemring <ul style="list-style-type: none"> • JUNO
Casella Measurement <ul style="list-style-type: none"> • Microdust Pro 	Smiths <ul style="list-style-type: none"> • LCD 3.2E • LCD 3.3
Honeywell <ul style="list-style-type: none"> • Single Point Monitor (SPM) • SPM Flex 	MSA <ul style="list-style-type: none"> • Sirius • Altair • Safesite • Altair 5x BT
	Coastal Environmental <ul style="list-style-type: none"> • WeatherPak
	Fluke
	Lighthouse <ul style="list-style-type: none"> • Boulder Counter

Integrated Instruments
 Personal Monitors, Process Unit Monitors, Handheld and Portable Monitors, Fenceline Monitors, Community Monitors

Utilized Within:



Pricing:

Smart LINC Includes Service 2- & 5-Year Options
Two Year Smart LINC Upgrade Included

Rentals (Internet Service Included)

Chemical Area Monitoring Kits
Chemical & Particulate Monitoring Kits
DustTrak Viper Smart LINC & BlueLINC Combo
SPM Flex Smart LINC

Safe Environment Engineering

28320 Constellation Road • Valencia CA 91355

Tel (661) 295-5500

E-mail support@safeenv.com • www.safeenv.com