



**Safe  
Environment  
Engineering**



## Viper Survey Manager

The Viper Survey Controller operates by creating a survey run based on the assets assigned to a deployment. Operators manually input the run description, Smart Gateway number and LINC instrument ID in order to start a survey run. In turn, instrument readings are published to the EPA Viper servers where they are assigned to an emergency response and displayed in the Viper Deployment Manager tool.

The Viper Survey Manager option is available on both the Smart LINC and Smart Gateway

The option greatly simplifies the data acquisition process allowing the Safe Environment Engineering software to directly post to the Viper servers.

Survey Manager automatically receives the instrument, LINC, Smart Gateway and location information eliminating the need to manually input this information. As with Survey Controller, Survey Manager will also require contacting ERT Support for assignment to a deployment.

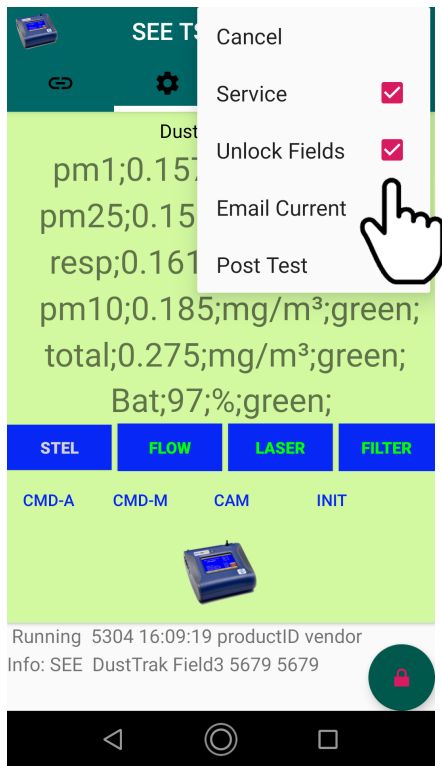
### Survey Manager – Smart LINC

The Smart LINC will post reading and location information to the Viper servers by enabling the EPA option in the setting window.

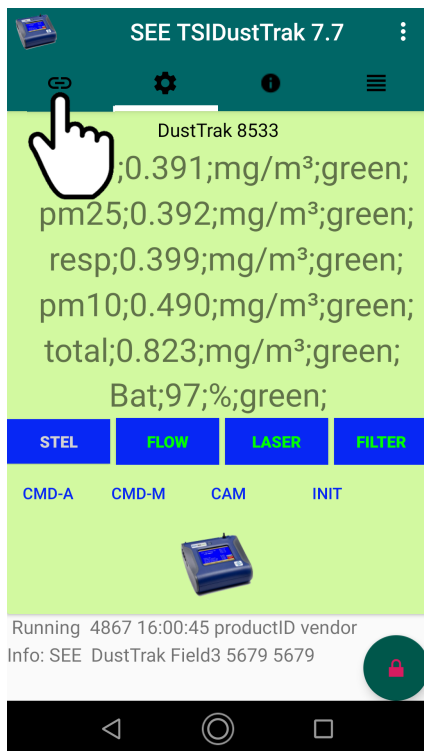
From the readings screen tap the 3 dots icon in the upper right corner.



Tap the Unlock Fields to place a checkmark in the box.



Tap the Setting tab icon.



In the Setting tab, tap the Connect box to temporally pause the application. Then type the name of the Emergency Response into the ID and Field Three lines.

SEE TSIDustTrak 7.7

SEE EPA Post for DustTrak

UDP SCAN STOP SAVE

UDP 5679 76.90.94.227

UDP2 5679 192.168.7.74

☒ AutoStart ☐ Connect

ID SEE LauncherPort 8765

Token 6612555500 ☒ ICBRNE ☐ Srv2 ☐ NGPS ☐ Crypt

ModBusAddress Vendor E8:EB:1B:57:C2:7E vendor

☐ Play Sound ☐ Latch Alarm

GroupColor Teal #006666

SEE TSIDustTrak 7.7

SEE EPA Post for DustTrak

UDP SCAN STOP SAVE

UDP 5679 76.90.94.227

UDP2 5679 192.168.7.74

☒ AutoStart ☐ Connect

ID R2 ERT Field Three North LauncherPort 8765

Token 6612555500 ☒ ICBRNE ☐ Srv2 ☐ NGPS ☐ Crypt

ModBusAddress Vendor E8:EB:1B:57:C2:7E vendor

☐ Play Sound ☐ Latch Alarm

GroupColor Teal #006666

In the same screen swipe up to the EPA post box and place a checkmark in the box to enable.

SEE TSIDustTrak 7.7

SEE EPA Post for DustTrak

UDP SCAN STOP SAVE

UDP 5679 76.90.94.227

UDP2 5679 192.168.7.74

☒ AutoStart ☐ Connect

ID R2 ERT Field Three North LauncherPort 8765

Token 6612555500 ☒ ICBRNE ☐ Srv2 ☐ NGPS ☐ Crypt

ModBusAddress Vendor E8:EB:1B:57:C2:7E vendor

☐ Play Sound ☐ Latch Alarm

GroupColor Teal #006666

SEE TSIDustTrak 7.7

UDPListener 5555

HardCodeLatLon Latitude Longitude

HCGPS 34.45049 -118.57531

Email One per start

☐ Email ☒ Only one alert email per run

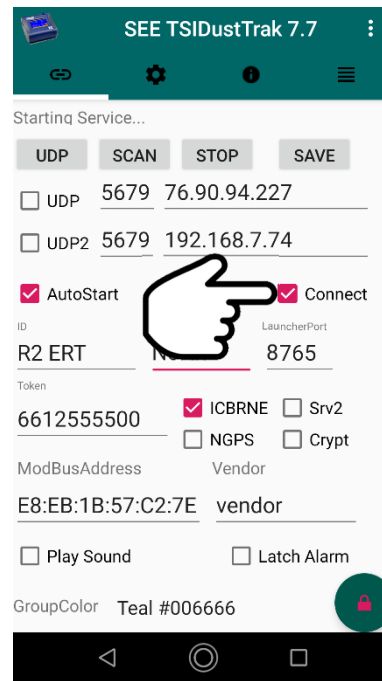
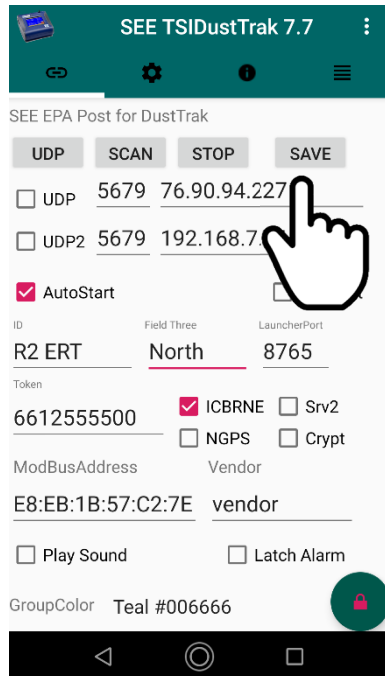
Recipient

☒ EPA EPA Login and Password

E-Lifeline@viper.ert.org

☐ Verbose

Swipe down to return to the top of the screen and tap the Save button and then place a checkmark back into the Connected box.



The Settings window will automatically revert back to the Readings window.

Contact ERT Support to have the readings assigned to a deployment.

### Survey Manager – Smart Gateway

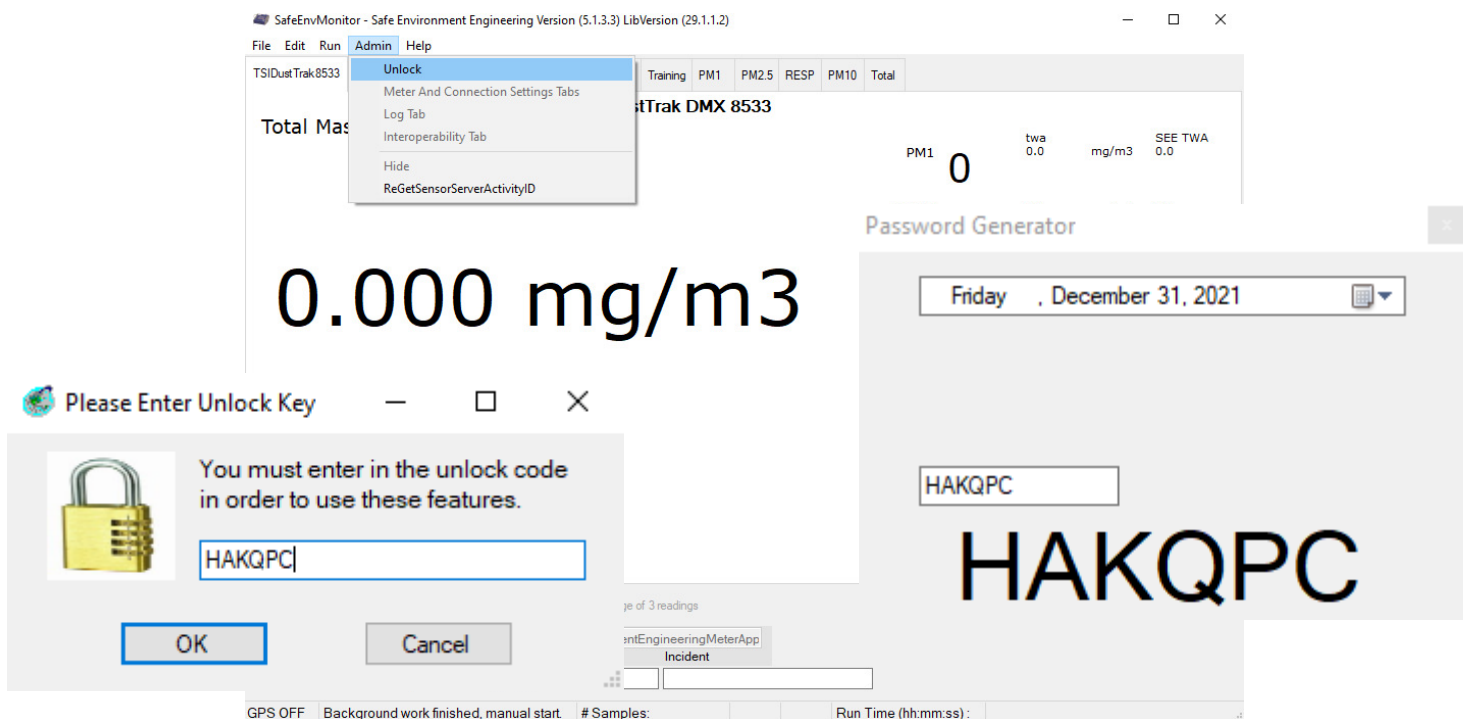
The Safe Environment Engineering meter applications installed in the Smart Gateway also have the ability to post directly to the Viper servers. To utilize this capability the meter applications would have to be launched independently without the use of Survey Controller.

Information on how to configure a meter application can be found on the following webpage:

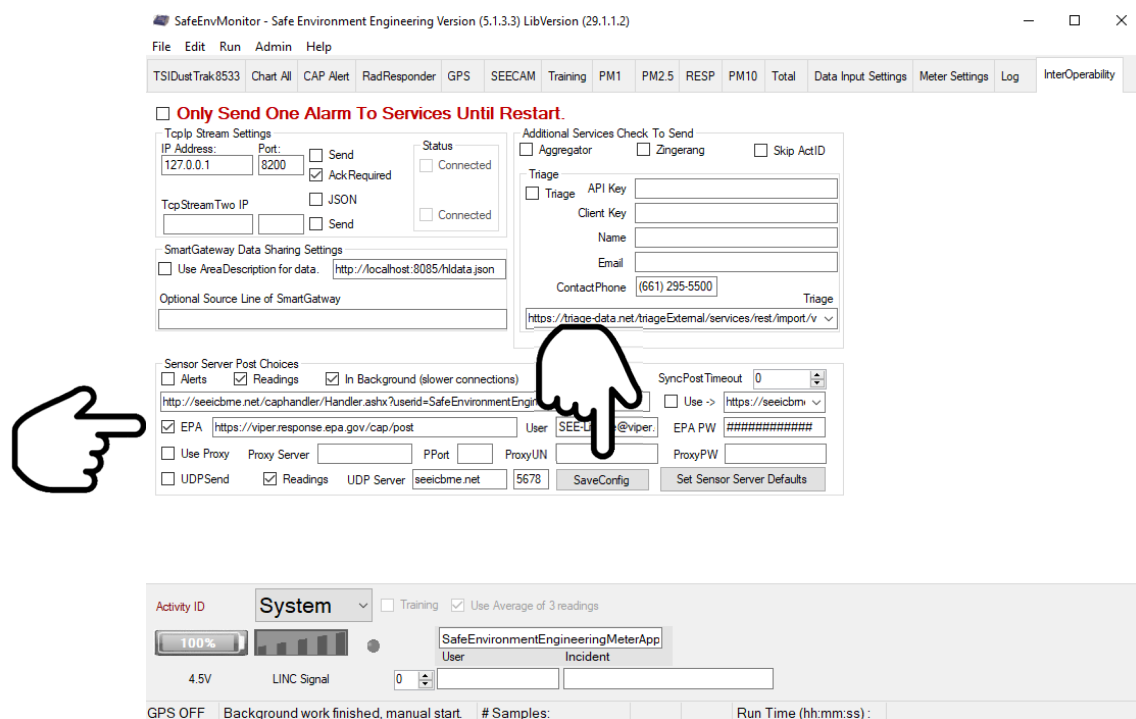
<https://www.safeenv.com/lifeline-training-video-lifeline-meter-applications/>

To enable the ability of a meter application to post data to Survey Manager a checkmark must be placed in the post to EPA box in the Interoperability tab in the meter application.

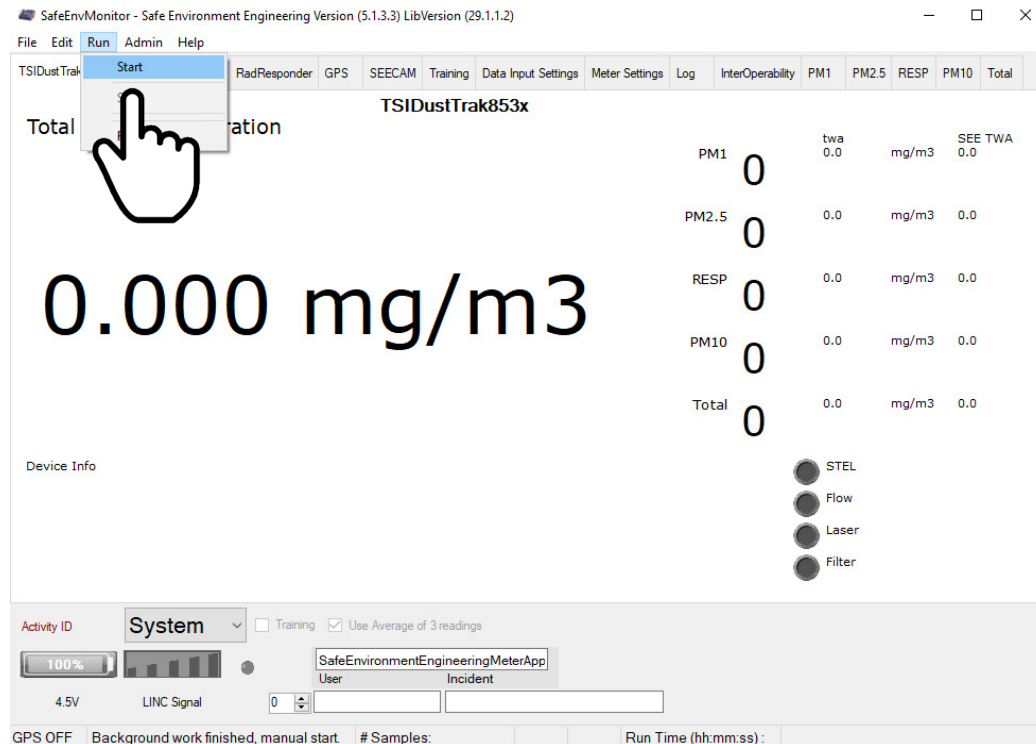
With the appropriate meter application launched unlock the administration capabilities by selecting Admin and typing in the appropriate password generated from the PasswordGenerator tool.



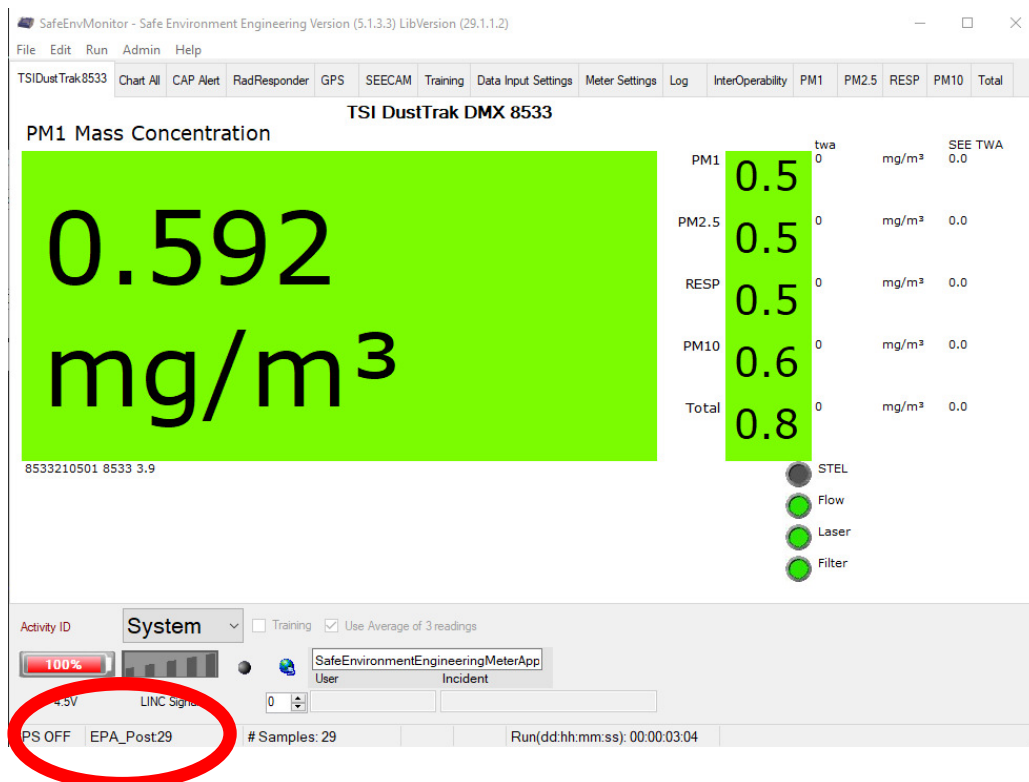
The meter application will present its InterOperability tab window. Place a checkmark in the EPA box followed by pressing the SaveConfig button.



The meter application will return to the home screen. Selecting Run then Start will turn the meter values Green and start posting to the Viper servers.



At the bottom of the window there will be an indication of successful postings to the Viper servers.



Contact ERT Support to have the readings assigned to a deployment.